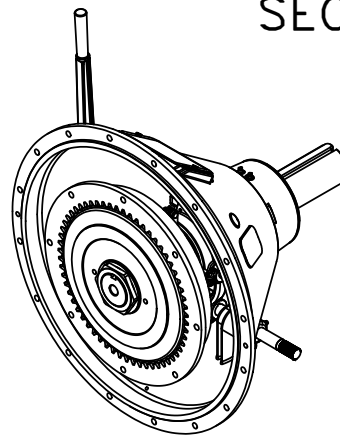
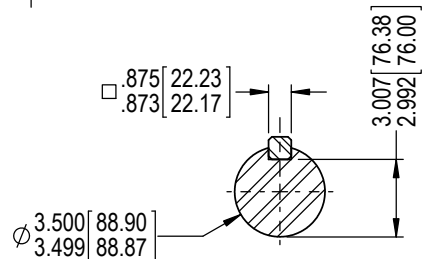
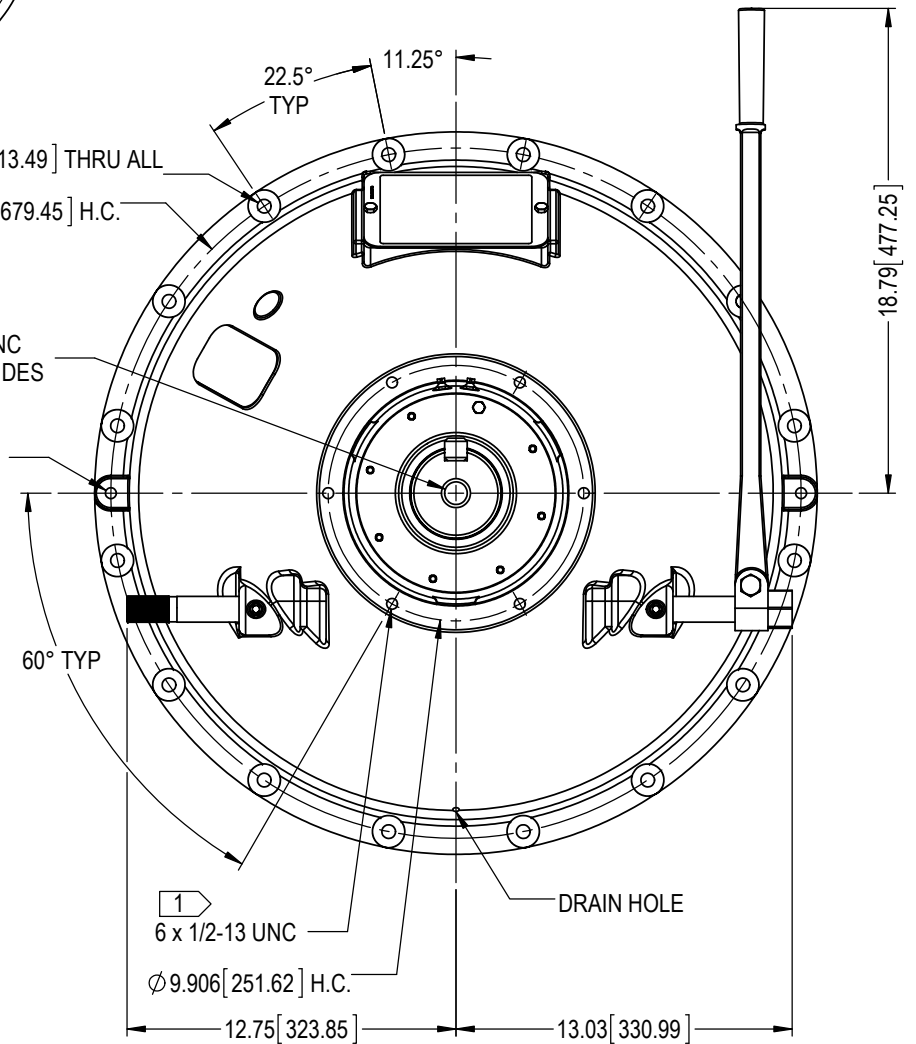


16 x ϕ 0.531 [13.49] THRU ALL
 ϕ 26.750 [679.45] H.C.

1-8 UNC
BOTH SIDES
2 x 1/2-13 UNC
180° APART



COMPLETE ASSEMBLY
EST WT = 407 lb [185 kg]
DRIVE RING & FRICTION DISCS
EST WT = 40.5 lb [18.3 kg]
EST WR² = 15 lb·ft² [0.632 kg·m²]

ALL ROTATING MEMBERS (PTO ENGAGED)
EST WR² = 17.8 lb·ft² [0.749 kg·m²]

1 CUSTOMER SUPPLIED OUTBOARD SUPPORT PLATE IS REQUIRED FOR SIDeload APPLICATIONS AND RECOMMENDED FOR IN-LINE APPLICATIONS.

| | | | |
|-----|-----------|-----------|----|
| E | EC013409 | 29 Sep 17 | RC |
| D | EC012193 | 14 Jan 16 | RC |
| C | EC012147 | 04 Jan 16 | RC |
| REV | REVISIONS | DATE | BY |

| | |
|--|-------------------|
| WPT POWER CORPORATION ENGINEERING DRAWINGS ARE NOT TO BE REPRODUCED IN ANY FORM WHATSOEVER WITHOUT AUTHORIZATION | |
| DRAWN RC | DATE 21 Sep 15 |
| CHECKED BDS | DATE 9/30/2015 |
| APPROVED RDH | DATE 01 Oct 15 |
| ISSUED RC | DATE 02 Oct 15 |

| | |
|--|----------------------------|
| WPT POWER CORPORATION | |
| WPL214 MECH PTO, SAE #0 BELLHOUSING, SEALED BALL BEARING COLLAR, PILOTLESS | |
| PART NUMBER WTD-14-203 | REVISION SHEET OF E 1 1 |

