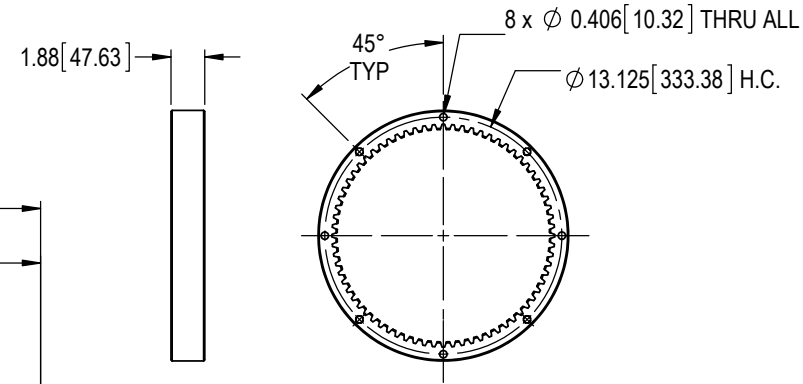


COMPLETE ASSEMBLY
EST WT = 218 lb [99 kg]

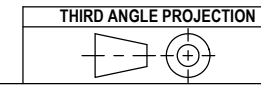
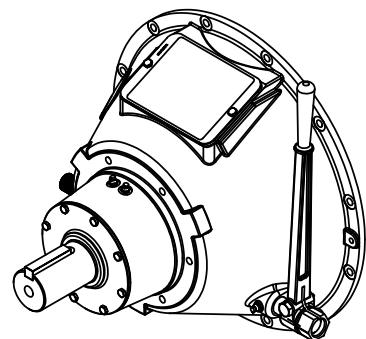
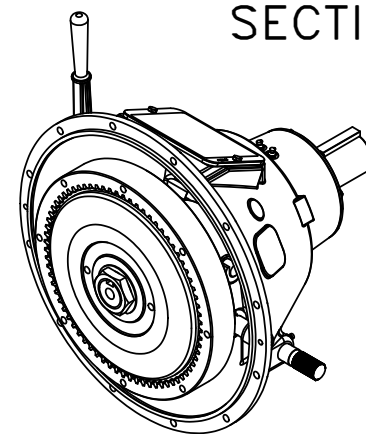
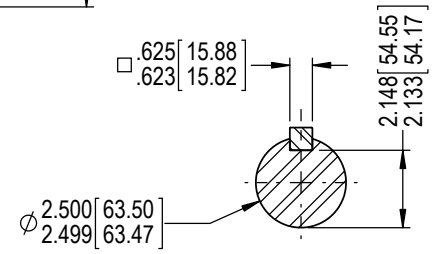
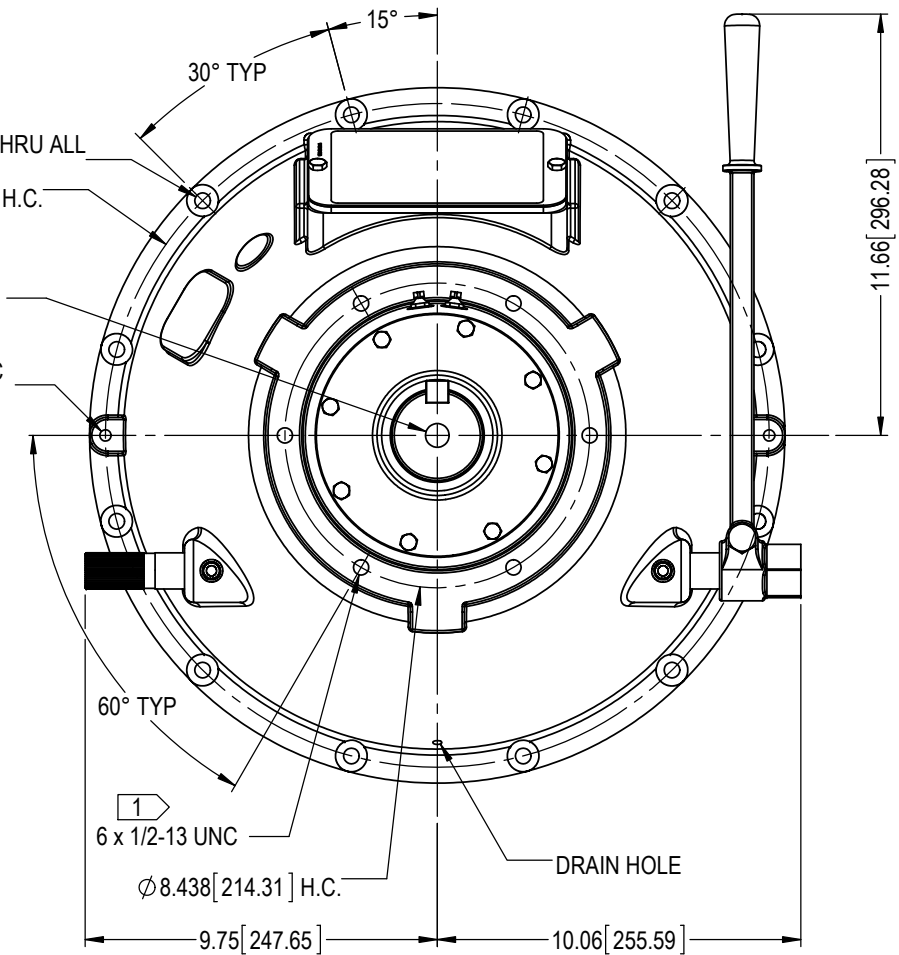
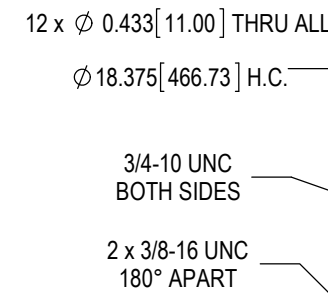
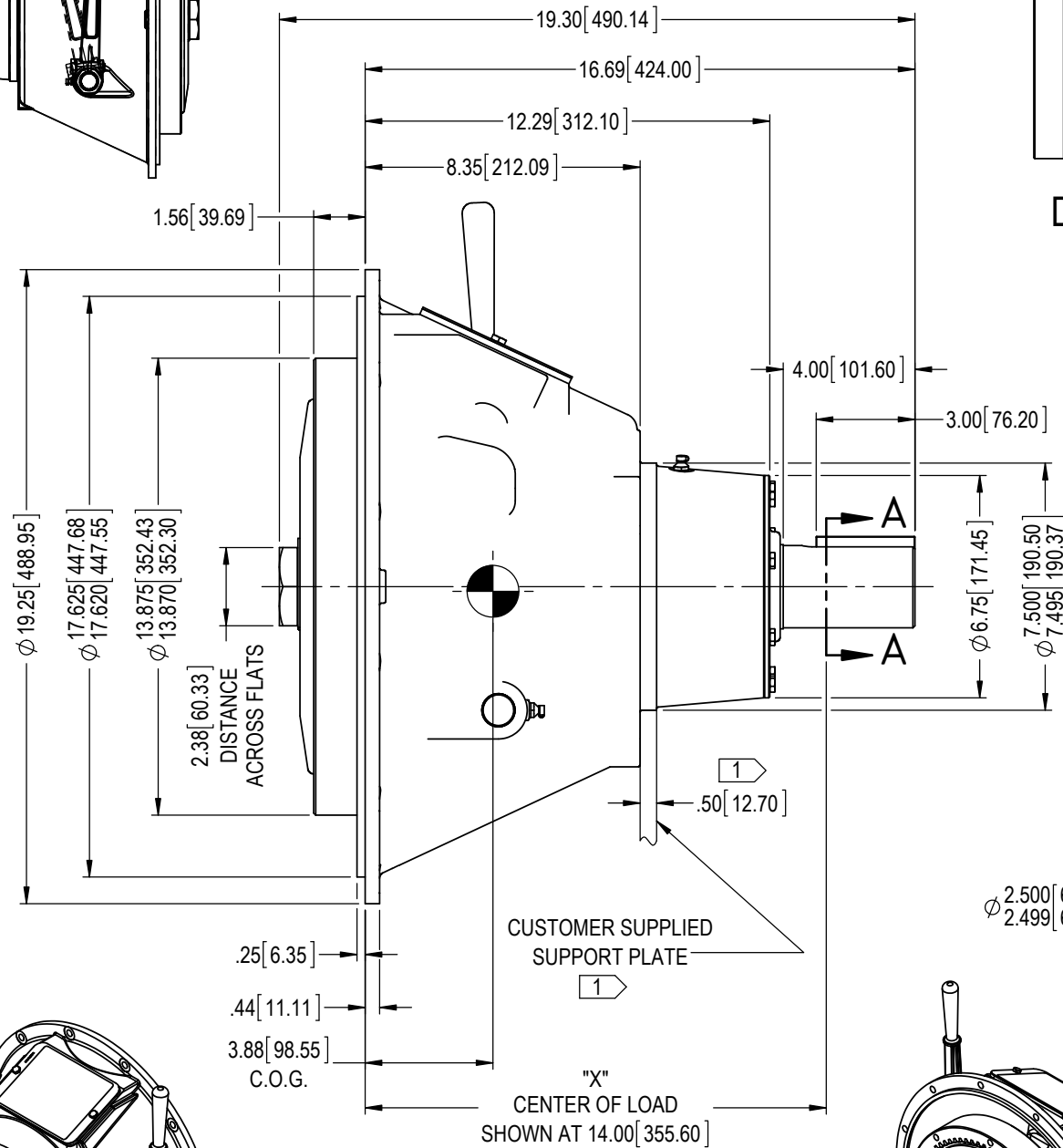
DRIVE RING & FRICTION DISCS
EST WT = 24.1 lb [10.9 kg]
EST WR² = 6.23 lb·ft² [0.262 kg·m²]

ALL ROTATING MEMBERS (PTO ENGAGED)
EST WR² = 6.56 lb·ft² [0.276 kg·m²]

1 CUSTOMER SUPPLIED OUTBOARD SUPPORT
PLATE IS REQUIRED FOR SIDeload APPLICATIONS
AND RECOMMENDED FOR IN-LINE APPLICATIONS.



DRIVE RING



F	EC013386	27 Sep 17	RC
E	EC012970	13 Apr 17	RC
D	EC012522	17 Aug 16	TDC
REV	REVISIONS	DATE	BY

WPT POWER CORPORATION ENGINEERING DRAWINGS ARE NOT TO BE REPRODUCED IN ANY FORM WHATSOEVER WITHOUT AUTHORIZATION	
DRAWN RC	DATE 07 Oct 15
CHECKED BDS	DATE 10/9/2015
APPROVED RDH	DATE 09 Oct 15
ISSUED RC	DATE 09 Oct 15

WPT POWER CORPORATION

**WPL211 MECH PTO, SAE #2
BELLHOUSING, BRG COLLAR, PILOTLESS**

PART NUMBER WTD-11-228	REVISION F	SHEET 1	OF 1
---------------------------	---------------	------------	---------