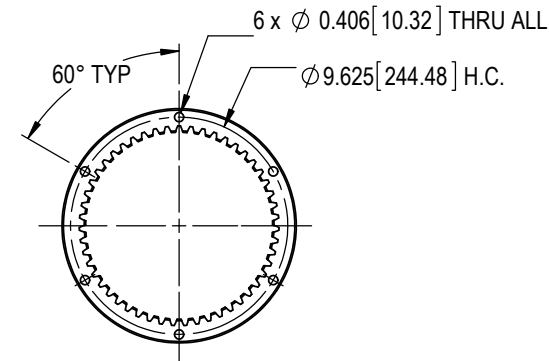
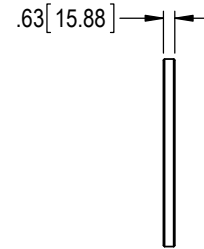


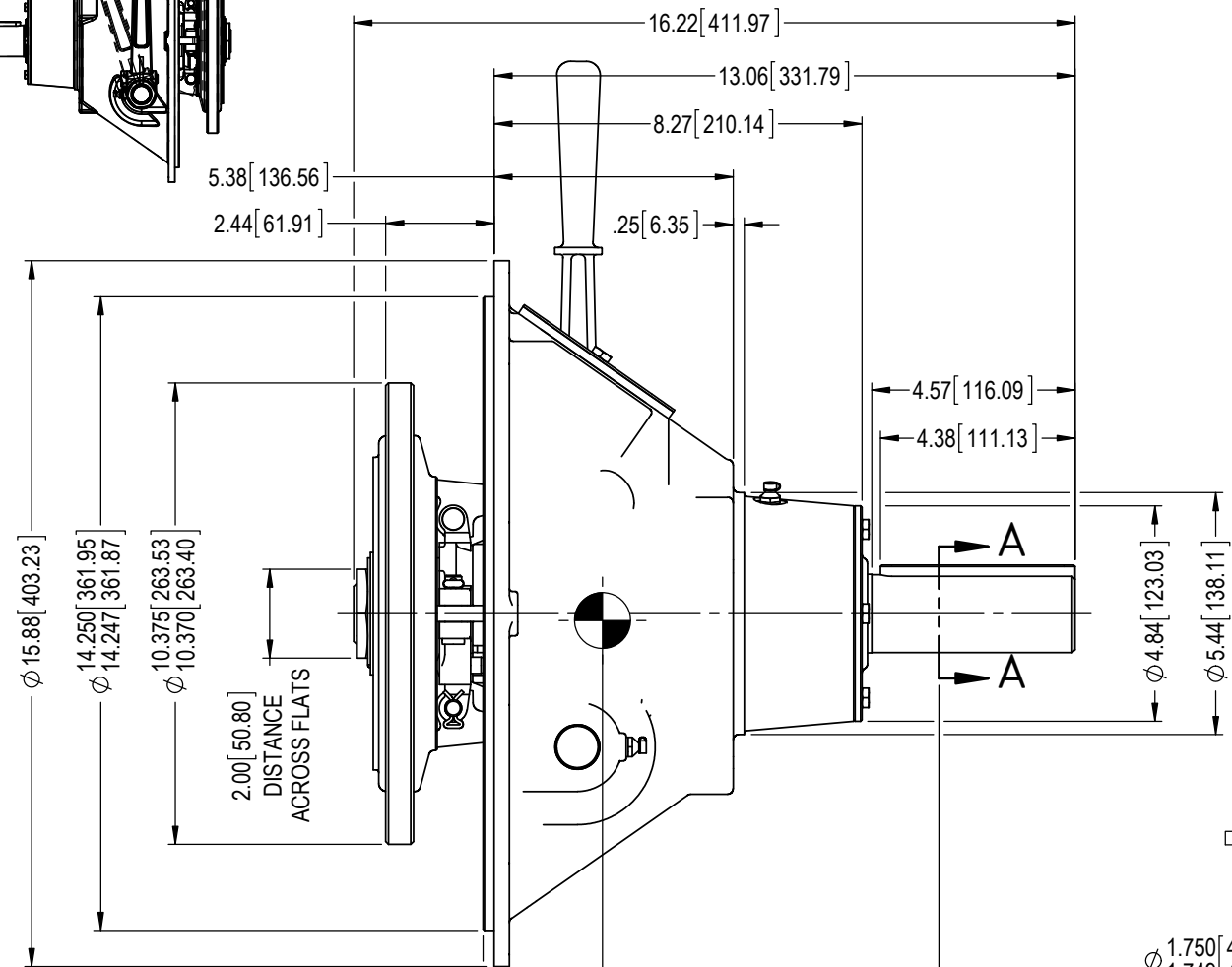
COMPLETE ASSEMBLY
EST WT = 89.4 lb [40.6 kg]

DRIVE RING & FRICTION DISCS
EST WT = 5.53 lb [2.51 kg]
EST WR² = 0.784 lb-ft² [0.033 kg-m²]

ALL ROTATING MEMBERS (PTO ENGAGED)
EST WR² = 0.825 lb-ft² [0.0348 kg-m²]



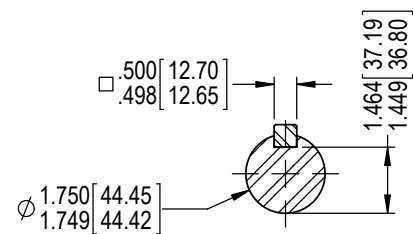
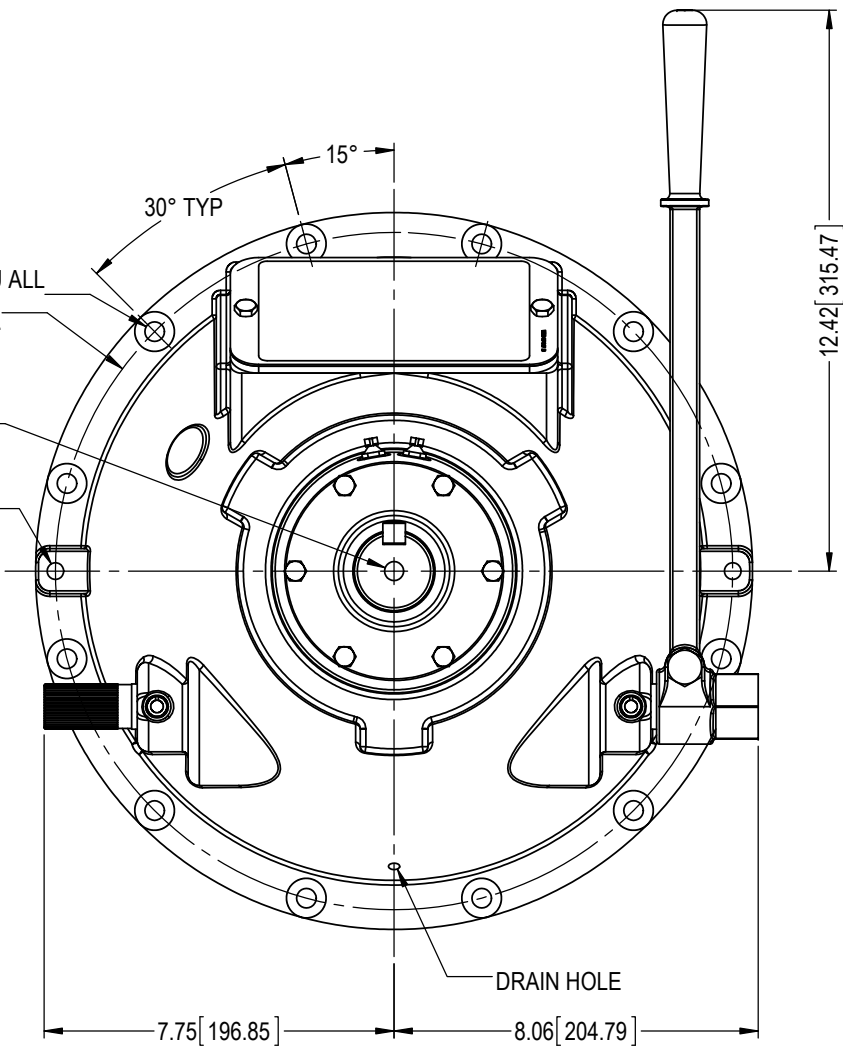
DRIVE RING



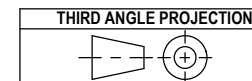
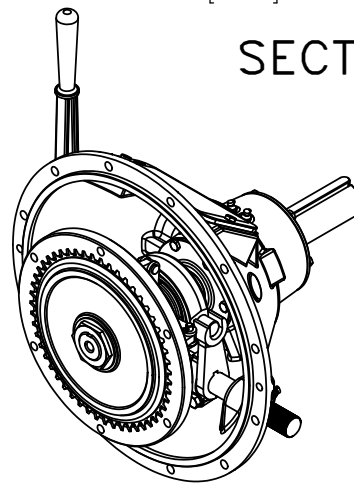
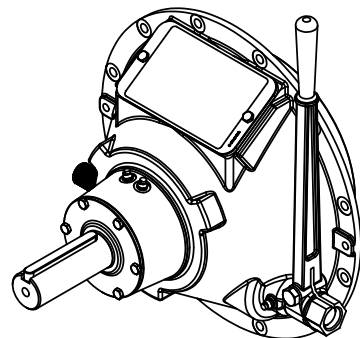
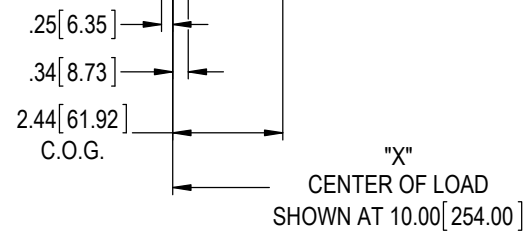
12 x Ø 0.433 [11.00] THRU ALL
Ø 15.000 [381.00] H.C.

1/2-13 UNC
BOTH SIDES

2 x 7/16-14 UNC
180° APART



SECTION A-A



E	EC013389	28 Sep 17	RC
D	EC012358	15 Apr 16	RC
C	EC012184	14 Jan 16	RC
REV	REVISIONS	DATE	BY

WPT POWER CORPORATION ENGINEERING DRAWINGS ARE NOT TO BE REPRODUCED IN ANY FORM WHATSOEVER WITHOUT AUTHORIZATION	
DRAWN RC	DATE 14 Oct 15
CHECKED BDS	DATE 10/16/2015
APPROVED RDH	DATE 23 Oct 15
ISSUED TDC	DATE 23 Oct 15

WPT POWER CORPORATION

**WPL108 MECH PTO, SAE #4
BELLHOUSING, BRG COLLAR, PILOTLESS**

PART NUMBER WTD-08-142	REVISION E	SHEET 1	OF 1
---------------------------	---------------	------------	---------