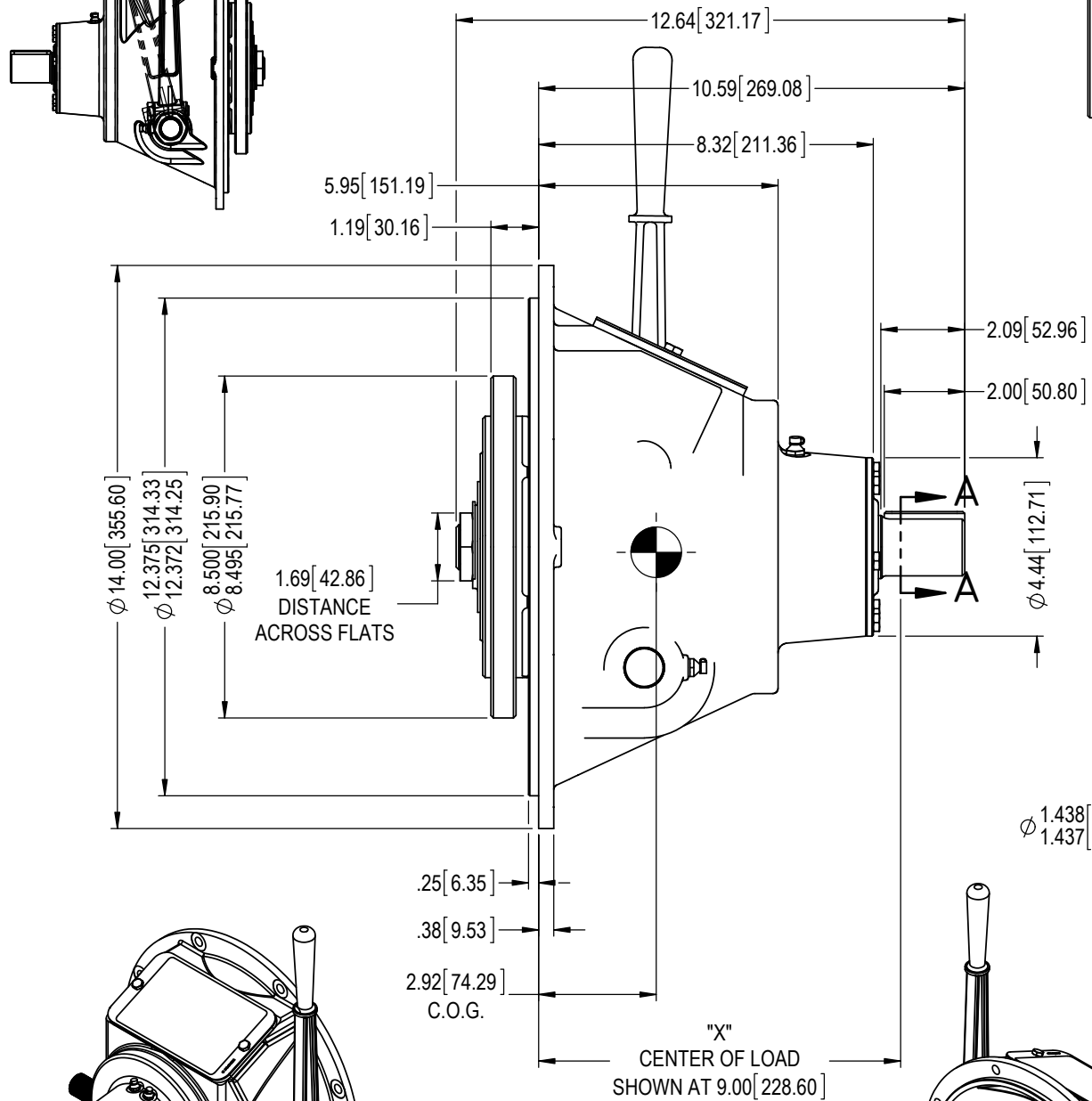


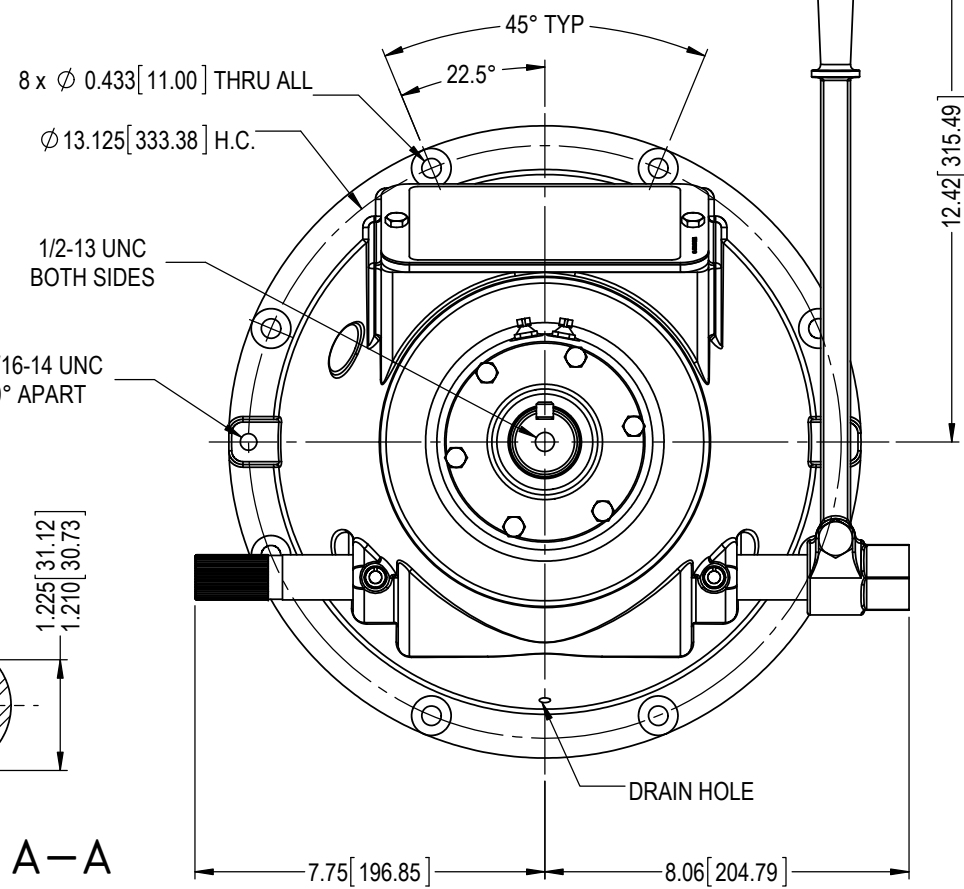
COMPLETE ASSEMBLY
EST WT = 69.7 lb [31.6 kg]

DRIVE RING & FRICTION DISCS
EST WT = 6.47 lb [2.93 kg]
EST WR² = 0.391 lb-ft² [0.0165 kg-m²]

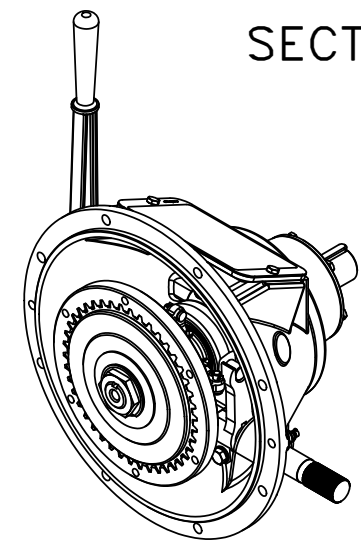
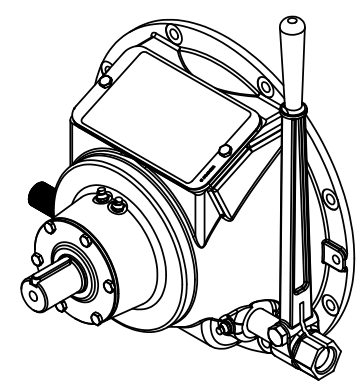
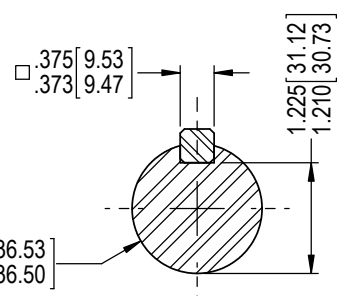
ALL ROTATING MEMBERS (PTO ENGAGED)
EST WR² = 0.383 lb-ft² [0.0161 kg-m²]



DRIVE RING



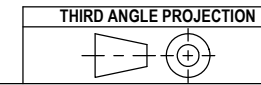
SECTION A-A



F	EC013387	27 Sep 17	RC
E	EC013016	28 Apr 17	RC
D	EC012377	05 May 16	RC
REV	REVISIONS	DATE	BY

WPT POWER CORPORATION ENGINEERING DRAWINGS ARE NOT TO BE REPRODUCED IN ANY FORM WHATSOEVER WITHOUT AUTHORIZATION	
DRAWN RC	DATE 02 Nov 15
CHECKED BDS	DATE 11/6/2015
APPROVED BDS	DATE 11/6/2015
ISSUED RC	DATE 06 Nov 15

WPT POWER CORPORATION
WPL106 MECH PTO, SAE #5
BELLHOUSING, BRG COLLAR, PILOTLESS



PART NUMBER WTD-06-155	REVISION F	SHEET 1	OF 1
---------------------------	---------------	------------	---------