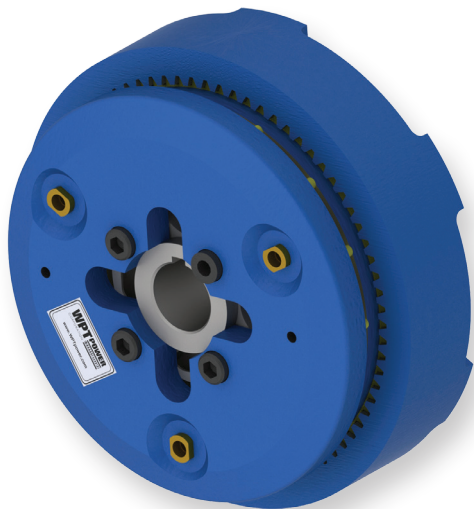
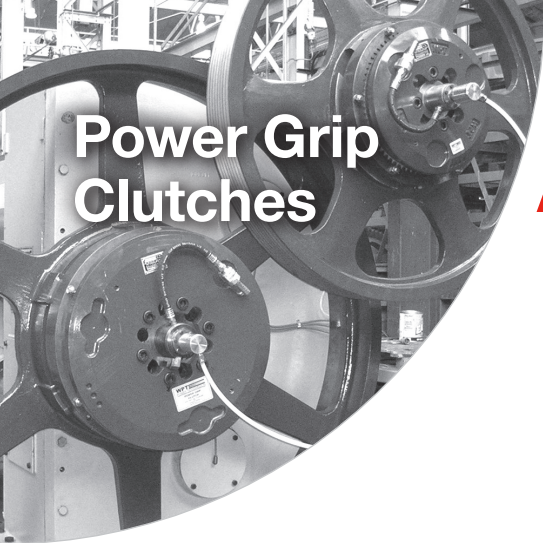


Power Grip Clutches



The Power Grip Clutch is designed to accommodate in-line and shaft-to-shaft power transmission applications with large inertia loads. Our air-tube design allows seamless, controlled engagement and disengagement with minimal air volume. Power Grip clutches allow for quick response, space-saving footprints, minimal maintenance requirements and are available in sizes ranging from 8" to 60".

- Extended Hub Teeth for serviceability
- Wave Springs as standard release spring
- Optional standard or quick change driving adapters
- Optional split airtubes and friction discs for easier replacement and minimal downtime
- Available with pneumatic or hydraulic actuation



Torque Rating @ 100 psi (7 bar)		Maximum Speed	Maximum Slip Speed	Weight and Inertia				Lining Area	Bore Range	
Model	Static Torque			Total Weight	Total Inertia	Ring & FD Weight	Ring & FD Inertia		Minimum	Maximum
		lbf-in (N-m)	r/min	r/min	lb (kg)	lb-ft ² (kg-m ²)	lb (kg)	lb-ft ² (kg-m ²)	in ² (cm ²)	in (mm)
108	7,560 (854)	3600	2860	30 (14)	2.4 (0.10)	8.3 (3.7)	1.2 (0.05)	55 (355)	0.94 (23.8)	1.94 (49.2)
208	14,700 (1660)	3600	2860	50 (23)	4.3 (0.18)	17 (7.5)	2.3 (0.10)	110 (711)	0.94 (23.8)	1.94 (49.2)
308	21,300 (2410)	3600	2860	67 (30)	6.0 (0.25)	25 (11)	3.5 (0.15)	170 (1070)	1.13 (28.6)	1.94 (49.2)
111	17,000 (1920)	2650	2080	55 (25)	9.2 (0.39)	19 (9.0)	5.4 (0.23)	110 (730)	1.25 (31.8)	3.00 (76.2)
211	33,300 (3760)	2650	2080	96 (44)	16 (0.69)	37 (17)	10 (0.44)	230 (1460)	1.25 (31.8)	3.00 (76.2)
311	48,700 (5500)	2650	2080	130 (60)	23 (0.97)	52 (24)	15 (0.65)	340 (2190)	1.25 (31.8)	3.00 (76.2)
114H	35,600 (4020)	2180	1640	160 (73)	41 (1.7)	38 (17)	17 (0.72)	170 (1070)	2.13 (54.0)	3.25 (82.6)
214H	69,700 (7880)	2180	1640	210 (96)	57 (2.4)	57 (26)	25 (1.0)	330 (2140)	2.13 (54.0)	3.25 (82.6)
314H	102,000 (11500)	2180	1640	290 (130)	80 (3.4)	97 (44)	42 (1.8)	500 (3220)	2.13 (54.0)	3.25 (82.6)
216	79,700 (9010)	1900	1430	300 (130)	88 (3.7)	79 (36)	42 (1.8)	460 (2940)	2.13 (54.0)	3.41 (86.6)
316	117,000 (13200)	1900	1430	380 (170)	120 (4.9)	120 (53)	61 (2.6)	680 (4410)	2.13 (54.0)	3.41 (86.6)
218	130,000 (14700)	1750	1270	400 (180)	140 (6.0)	95 (43)	62 (2.6)	520 (3340)	2.38 (60.3)	3.88 (98.4)
318	191,000 (21600)	1750	1270	500 (230)	190 (8.0)	140 (66)	93 (3.9)	780 (5010)	2.38 (60.3)	3.88 (98.4)
118H	82,000 (9270)	1750	1270	290 (130)	100 (4.2)	44 (20)	28 (1.2)	260 (1670)	2.38 (60.3)	3.88 (98.4)
218H	161,000 (18200)	1750	1270	410 (190)	150 (6.4)	95 (43)	62 (2.6)	520 (3340)	2.38 (60.3)	3.88 (98.4)
318H	238,000 (26900)	1750	1270	530 (240)	200 (8.4)	140 (66)	93 (3.9)	780 (5010)	2.38 (60.3)	3.88 (98.4)
221	189,000 (21400)	1530	1090	570 (260)	280 (12)	140 (63)	120 (5.2)	720 (4640)	2.75 (69.9)	4.75 (120.7)
321	279,000 (31500)	1530	1090	740 (340)	380 (16)	210 (95)	190 (7.8)	1,100 (6960)	2.75 (69.9)	4.75 (120.7)
124H	167,000 (18900)	1350	950	590 (270)	370 (16)	120 (52)	130 (5.6)	570 (3710)	2.75 (69.9)	4.75 (120.7)
224H	330,000 (37300)	1350	950	800 (360)	510 (22)	190 (86)	210 (8.8)	1,100 (7410)	2.75 (69.9)	4.75 (120.7)
324H	488,000 (55100)	1350	950	990 (450)	620 (26)	250 (110)	260 (11)	1,700 (11100)	2.75 (69.9)	4.75 (120.7)
124SHD	207,000 (23400)	1350	950	610 (280)	380 (16)	120 (52)	130 (5.6)	570 (3710)	2.75 (69.9)	4.75 (120.7)
224SHD	413,000 (46700)	1350	950	820 (370)	520 (22)	190 (86)	210 (8.8)	1,100 (7410)	2.75 (69.9)	4.75 (120.7)
324SHD	620,000 (70100)	1350	950	1,000 (460)	630 (27)	250 (110)	260 (11)	1,700 (11100)	2.75 (69.9)	4.75 (120.7)
227	370,000 (41800)	1200	850	930 (420)	700 (29)	190 (86)	250 (11)	1,500 (9430)	3.50 (88.9)	7.00 (177.8)
327	549,000 (62000)	1200	850	1,200 (560)	950 (40)	300 (140)	400 (17)	2,200 (14100)	3.50 (88.9)	7.00 (177.8)
230H	648,000 (73200)	1100	760	1,500 (670)	1,300 (56)	290 (130)	440 (19)	1,600 (10500)	3.88 (98.5)	7.00 (177.8)
330H	954,000 (108000)	1100	760	1,900 (850)	1,700 (72)	430 (190)	650 (27)	2,400 (15800)	3.88 (98.5)	7.00 (177.8)
236	1,010,000 (114000)	900	640	2,100 (970)	3,000 (130)	430 (190)	960 (40)	2,200 (14500)	5.00 (127.0)	9.00 (228.6)
336	1,490,000 (168000)	900	640	2,900 (1300)	3,300 (140)	640 (290)	980 (41)	3,400 (21700)	5.00 (127.0)	9.00 (228.6)
242	1,540,000 (174000)	750	550	3,100 (1400)	5,500 (230)	680 (310)	2,200 (94)	2,800 (18100)	7.00 (177.8)	11.00 (279.4)
342	2,290,000 (259000)	750	550	4,100 (1800)	7,500 (320)	1,100 (480)	3,500 (150)	4,200 (27200)	7.00 (177.8)	11.00 (279.4)
248	2,750,000 (311000)	650	480	4,700 (2100)	11,000 (450)	800 (360)	3,400 (140)	4,000 (25900)	8.00 (203.2)	12.00 (304.8)
348	4,100,000 (463000)	650	480	5,800 (2600)	14,000 (570)	1,100 (520)	4,800 (200)	6,000 (38900)	8.00 (203.2)	12.00 (304.8)
260	5,590,000 (632000)	525	380	7,500 (3400)	23,000 (960)	1,500 (670)	8,500 (360)	7,200 (46700)	11.00 (279.4)	15.00 (381.0)
360	8,320,000 (940000)	525	380	9,400 (4300)	31,000 (1300)	2,200 (1000)	13,000 (550)	10,900 (70000)	11.00 (279.4)	15.00 (381.0)
460	11,100,000 (1250000)	525	380	12,000 (5300)	40,000 (1700)	3,100 (1400)	18,000 (750)	14,500 (93400)	11.00 (279.4)	15.00 (381.0)

Consult WPT Application Engineering for application assistance and applicable service factors.

Larger bore sizes may be accommodated, consult WPT Application Engineering.

Dynamic torque is 75% of static torque.

Power Grip Clutches



Size	A	B			C		D	E
		Hole Circle	Thread Size	Quantity	+0.003/ -0.000	(+0.08/ -0.00)		
	in (mm)	in (mm)	in		in (mm)		in (mm)	in (mm)
108	10 3/8 (263.5)	9.63 (244.5)	1/2-13	6	8.872 (225.35)	9 5/8 (244.5)	3 7/8 (98.43)	
208	10 3/8 (263.5)	9.63 (244.5)	1/2-13	6	8.872 (225.35)	9 5/8 (244.5)	5 1/4 (133.4)	
308	10 3/8 (263.5)	9.63 (244.5)	1/2-13	6	8.872 (225.35)	9 5/8 (244.5)	6 5/8 (168.3)	
111	14 3/8 (365.1)	13.38 (339.7)	5/8-11	8	12.375 (314.33)	11 15/16 (303.2)	4 1/8 (104.8)	
211	14 3/8 (365.1)	13.38 (339.7)	5/8-11	8	12.375 (314.33)	11 15/16 (303.2)	5 3/8 (136.5)	
311	14 3/8 (365.1)	13.38 (339.7)	5/8-11	8	12.375 (314.33)	11 15/16 (303.2)	6 11/16 (169.9)	
114H	17 1/2 (444.5)	16.25 (412.8)	5/8-11	6	15.125 (384.18)	16 5/16 (414.3)	5 1/8 (130.2)	
214H	17 1/2 (444.5)	16.25 (412.8)	5/8-11	6	15.125 (384.18)	16 5/16 (414.3)	6 5/8 (168.3)	
314H	17 1/2 (444.5)	16.25 (412.8)	5/8-11	6	15.125 (384.18)	16 5/16 (414.3)	8 (203.2)	
216	20 (508.0)	18.75 (476.3)	5/8-11	6	17.500 (444.50)	16 1/4 (413.9)	6 9/16 (166.7)	
316	20 (508.0)	18.75 (476.3)	5/8-11	6	17.500 (444.50)	16 1/4 (413.9)	8 (203.2)	
218	22 (558.8)	20.75 (527.1)	5/8-11	6	19.500 (495.30)	19 3/8 (492.1)	7 1/4 (184.2)	
318	22 (558.8)	20.75 (527.1)	5/8-11	6	19.500 (495.30)	19 3/8 (492.1)	8 7/8 (225.4)	
118H	22 (558.8)	20.75 (527.1)	5/8-11	6	19.500 (495.30)	21 5/16 (541.3)	5 11/16 (144.5)	
218H	22 (558.8)	20.75 (527.1)	5/8-11	6	19.500 (495.30)	21 5/16 (541.3)	7 1/4 (184.2)	
318H	22 (558.8)	20.75 (527.1)	5/8-11	6	19.500 (495.30)	21 5/16 (541.3)	8 3/4 (222.3)	
221	25 (635.0)	23.75 (603.3)	5/8-11	6	22.500 (571.50)	21 5/16 (541.3)	8 3/8 (212.7)	
321	25 (635.0)	23.75 (603.3)	5/8-11	6	22.500 (571.50)	21 5/16 (541.3)	10 1/8 (257.2)	
124H	28 (711.2)	26.75 (679.5)	5/8-11	6	25.500 (647.70)	27 (685.8)	6 3/4 (171.5)	
224H	28 (711.2)	26.75 (679.5)	5/8-11	6	25.500 (647.70)	27 (685.8)	8 1/2 (215.9)	
324H	28 (711.2)	26.75 (679.5)	5/8-11	6	25.500 (647.70)	27 (685.8)	10 1/2 (266.7)	
124SHD	28 (711.2)	26.75 (679.5)	5/8-11	6	25.500 (647.70)	27 (685.8)	6 7/8 (174.6)	
224SHD	28 (711.2)	26.75 (679.5)	5/8-11	6	25.500 (647.70)	27 (685.8)	8 1/2 (215.9)	
324SHD	28 (711.2)	26.75 (679.5)	5/8-11	6	25.500 (647.70)	27 (685.8)	10 1/2 (266.7)	
227	31 (787.4)	29.75 (755.7)	5/8-11	12	28.500 (647.70)	27 (685.8)	8 3/4 (222.3)	
327	31 (787.4)	29.75 (755.7)	5/8-11	12	28.500 (647.70)	27 (685.8)	10 3/4 (273.1)	
230H	34 (863.6)	32.75 (831.9)	5/8-11	12	31.500 (800.10)	32 3/8 (822.3)	10 3/16 (258.8)	
330H	34 (863.6)	32.75 (831.9)	5/8-11	12	31.500 (800.10)	32 3/8 (822.3)	12 3/4 (323.9)	
236	41 (1041.4)	39.75 (1009.7)	5/8-11	16	38.500 (977.90)	38 1/4 (971.6)	11 7/8 (301.6)	
336	41 (1041.4)	39.75 (1009.7)	5/8-11	16	38.500 (977.90)	38 1/4 (971.6)	14 3/4 (374.7)	
242	49 1/4 (1251.0)	47.25 (1200.2)	1-8	12	45.000 (1143.00)	44 1/8 (1120.8)	11 3/8 (288.9)	
342	49 1/4 (1251.0)	47.25 (1200.2)	1-8	12	45.000 (1143.00)	44 1/8 (1120.8)	14 1/8 (358.8)	
248	56 (1422.4)	54.00 (1371.6)	1-8	12	52.000 (1320.80)	52 3/8 (1330.3)	13 (330.2)	
348	56 (1422.4)	54.00 (1371.6)	1-8	12	52.000 (1320.80)	52 3/8 (1330.3)	15 3/4 (400.1)	
260	66 3/4 (1695.5)	64.75 (1644.7)	1-8	24	62.750 (1593.85)	61 1/2 (1562.1)	16 1/4 (412.8)	
360	66 3/4 (1695.5)	64.75 (1644.7)	1-8	24	62.750 (1593.85)	61 1/2 (1562.1)	20 (508.0)	
460	66 3/4 (1695.5)	64.75 (1644.7)	1-8	24	62.750 (1593.85)	61 1/2 (1562.1)	23 1/2 (596.9)	

