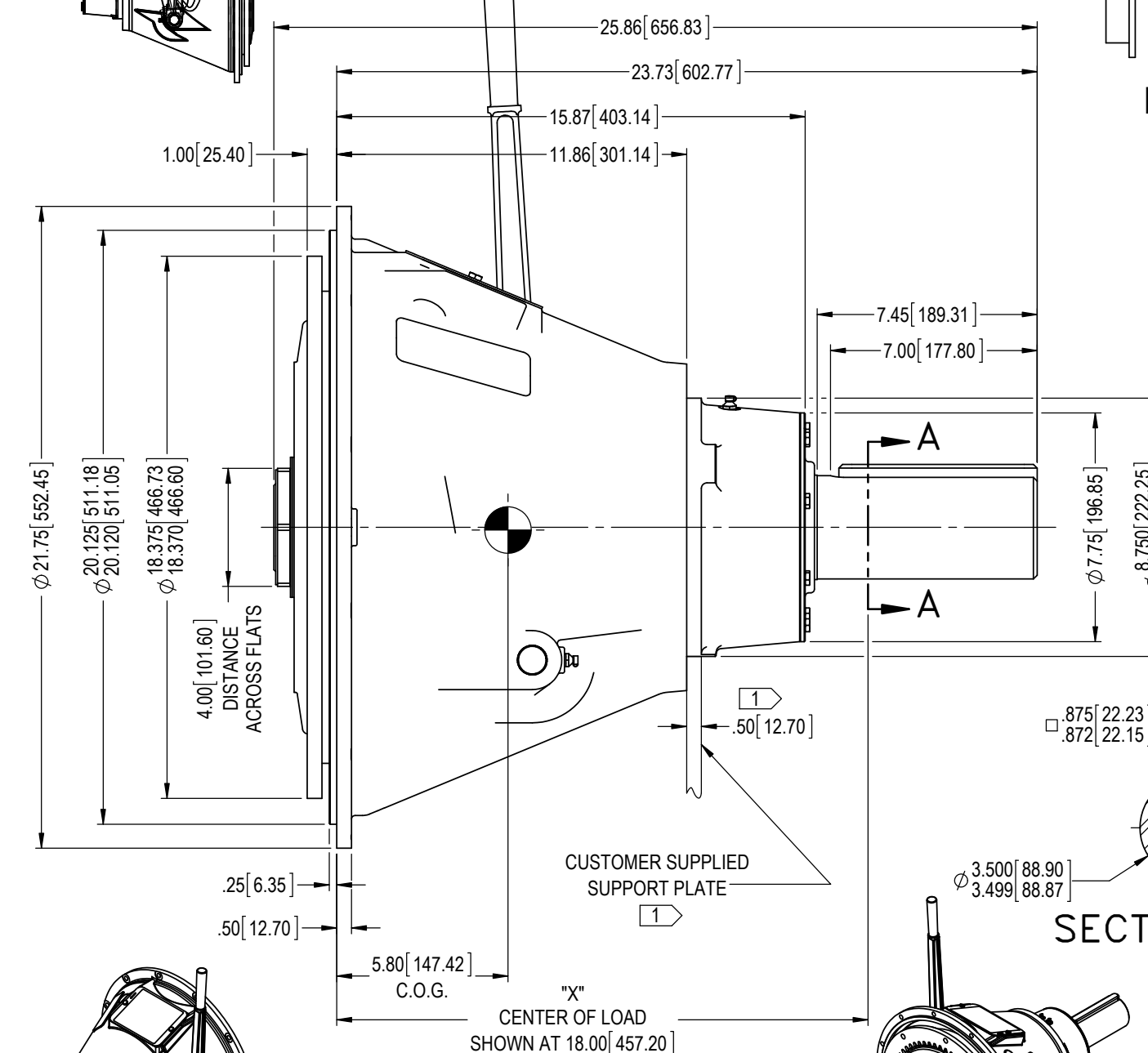


COMPLETE ASSEMBLY
EST WT = 368 lb [167 kg]

DRIVE RING & FRICTION DISCS
EST WT = 40.5 lb [18.3 kg]
EST WR² = 15 lb-ft² [0.632 kg-m²]

ALL ROTATING MEMBERS (PTO ENGAGED)
EST WR² = 17.8 lb-ft² [0.75 kg-m²]

1 CUSTOMER SUPPLIED OUTBOARD SUPPORT PLATE IS REQUIRED FOR SIDELOAD APPLICATIONS AND RECOMMENDED FOR IN-LINE APPLICATIONS.

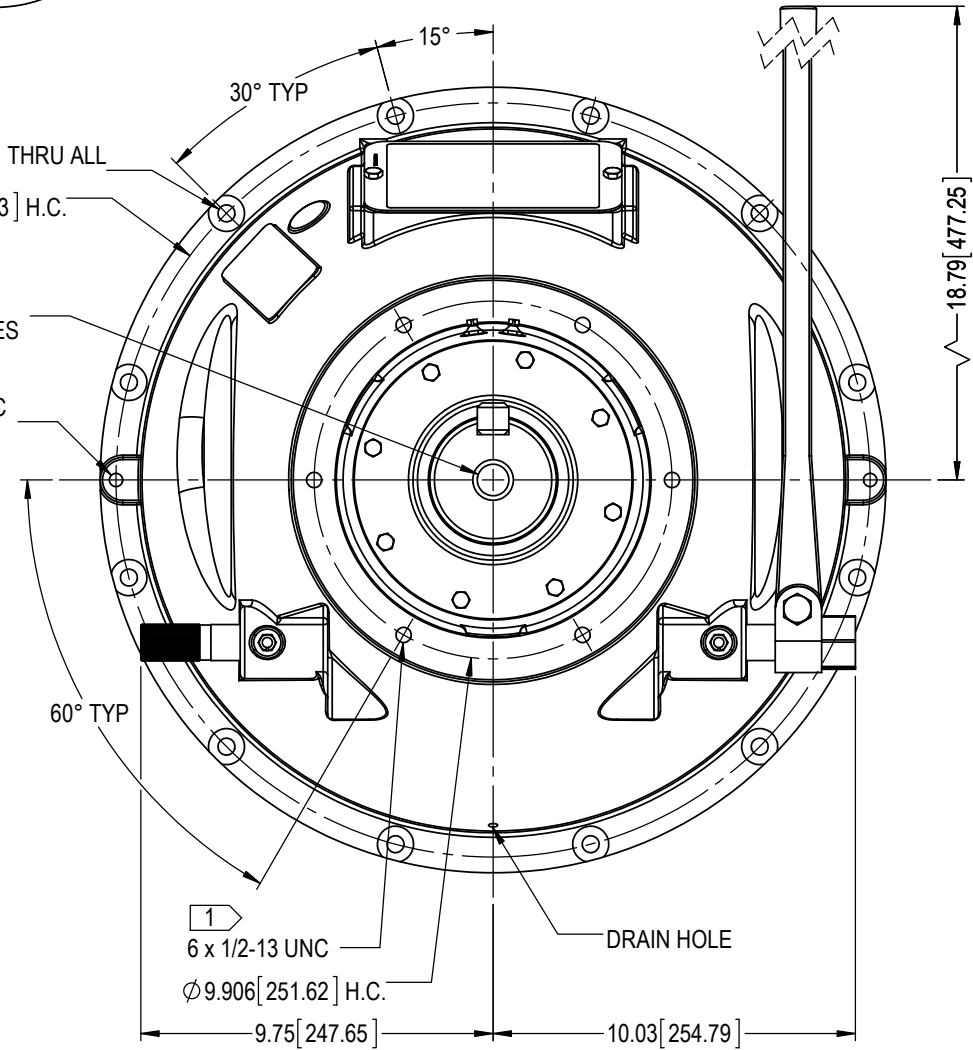


DRIVE RING

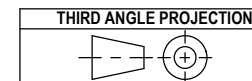
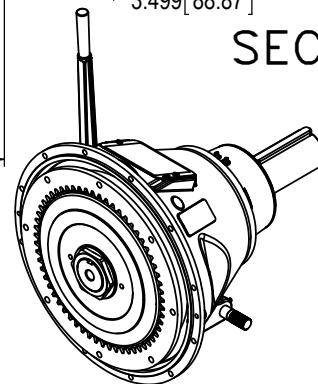
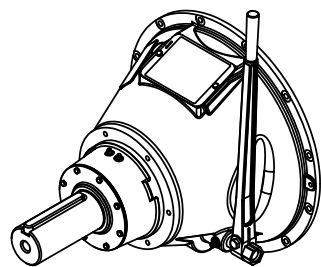
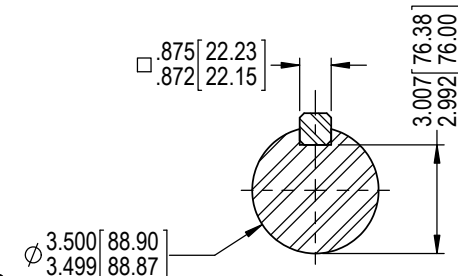
12 x Ø 0.469 [11.91] THRU ALL
Ø 20.875 [530.23] H.C.

1-8 UNC BOTH SIDES

2 x 7/16-14 UNC 180° APART



SECTION A-A



E	EC013378	9/22/2017	RC
D	EC012194	14 Jan 16	RC
C	EC012148	04 Jan 16	RC
REV	REVISIONS	DATE	BY

WPT POWER CORPORATION ENGINEERING DRAWINGS ARE NOT TO BE REPRODUCED IN ANY FORM WHATSOEVER WITHOUT AUTHORIZATION	
DRAWN RC	DATE 22 Sep 15
CHECKED BDS	DATE 9/30/2015
APPROVED RDH	DATE 01 Oct 15
ISSUED RC	DATE 02 Oct 15

WPT POWER CORPORATION

WPL214 MECH PTO, SAE #1 BELLHOUSING, SEALED BALL BEARING COLLAR, PILOTLESS

PART NUMBER	REVISION	SHEET	OF
WTD-14-21H	E	1	1