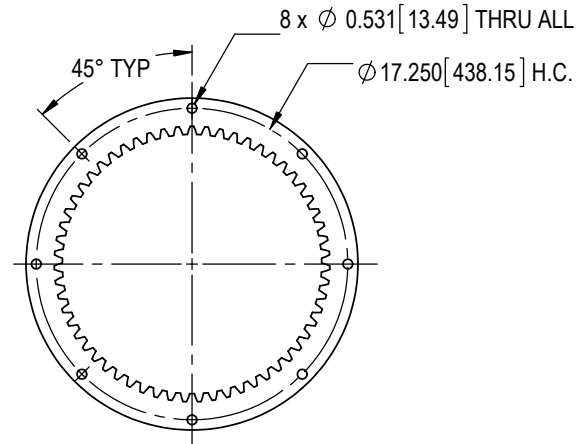


1.13 [28.58]
.50 [12.70]



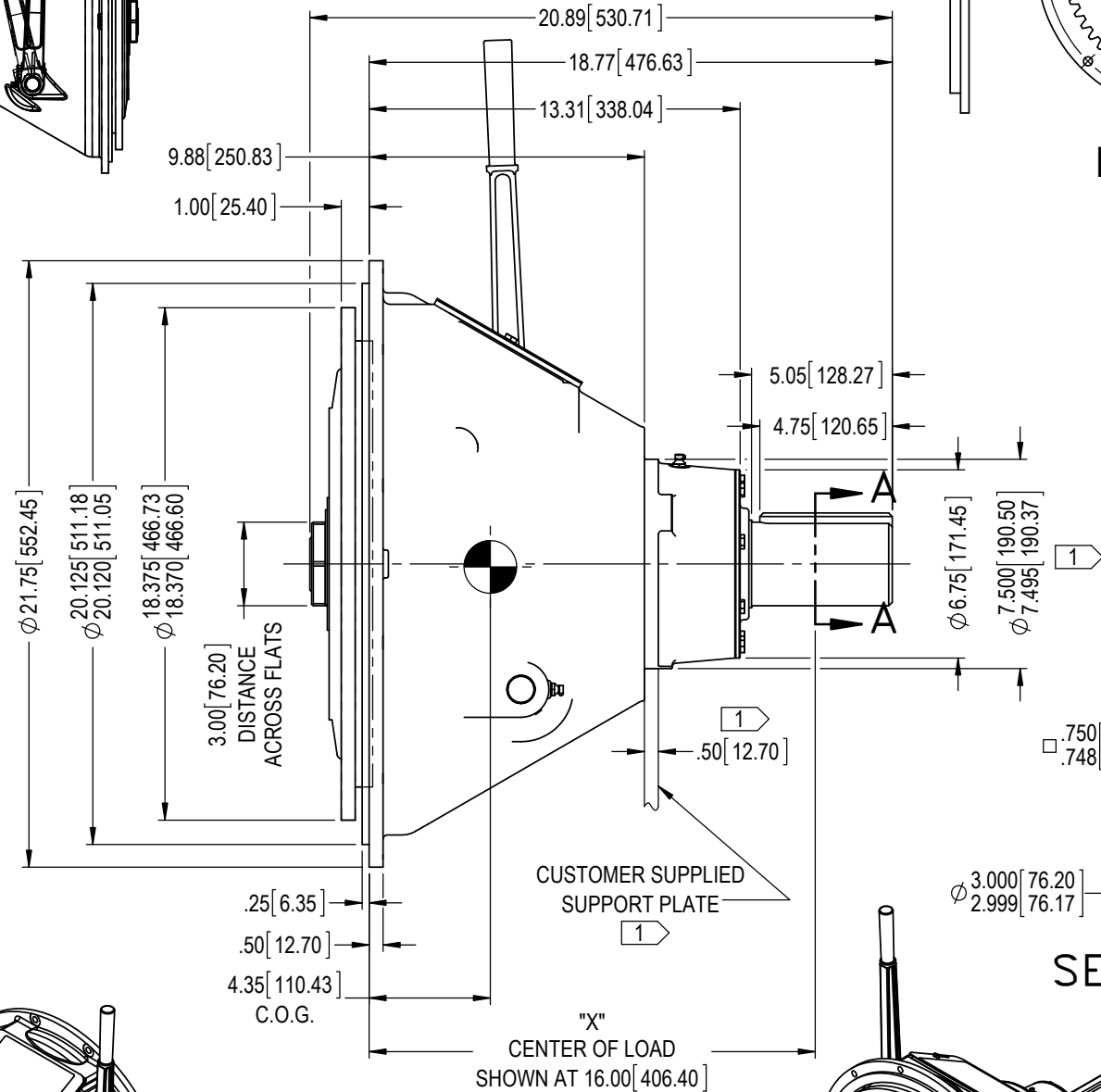
DRIVE RING

COMPLETE ASSEMBLY
EST WT = 276 lb [125 kg]

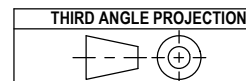
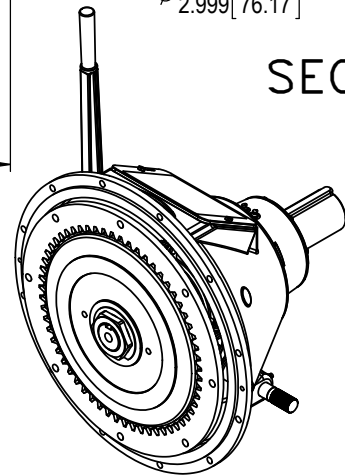
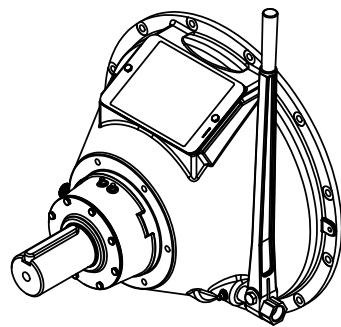
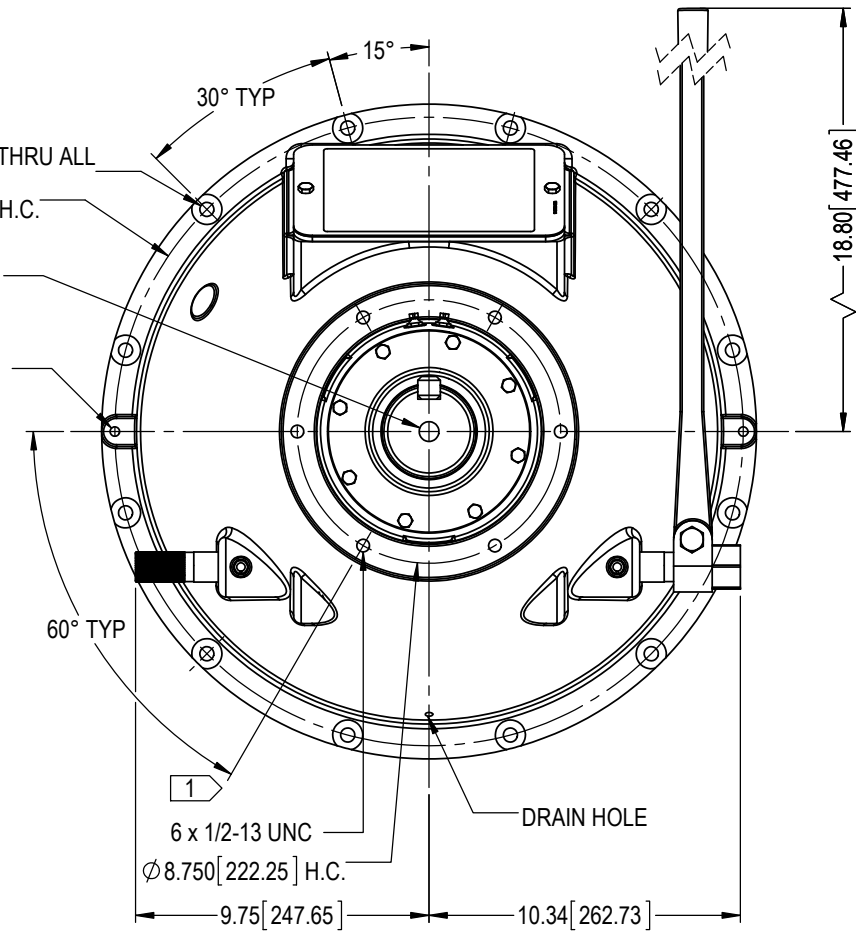
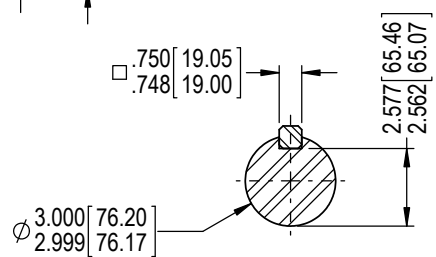
DRIVE RING & FRICTION DISCS
EST WT = 28.5 lb [12.9 kg]
EST WR² = 10.3 lb·ft² [0.432 kg·m²]

ALL ROTATING MEMBERS (PTO ENGAGED)
EST WR² = 12.8 lb·ft² [0.538 kg·m²]

1 CUSTOMER SUPPLIED OUTBOARD SUPPORT
PLATE IS REQUIRED FOR SIDeload APPLICATIONS
AND RECOMMENDED FOR IN-LINE APPLICATIONS.



12 x ϕ 0.469 [11.91] THRU ALL
 ϕ 20.875 [530.23] H.C.
3/4-10 UNC BOTH SIDES
2 x 3/8-16 UNC 180° APART



E	EC013367	9/22/2017	RC
D	EC013139	22 Jun 17	RC
C	EC012151	06 Jan 16	RC
REV	REVISIONS	DATE	BY

WPT POWER CORPORATION ENGINEERING DRAWINGS ARE NOT TO BE REPRODUCED IN ANY FORM WHATSOEVER WITHOUT AUTHORIZATION	
DRAWN RC	DATE 11 Sep 15
CHECKED RDH	DATE 07 Oct 15
APPROVED BDS	DATE 10/8/2015
ISSUED RC	DATE 08 Oct 15

WPT POWER CORPORATION

WPL114 MECH PTO, SAE #1
BELLHOUSING, SEALED BALL BEARING
COLLAR, PILOTLESS

PART NUMBER WTD-14-118	REVISION E	SHEET 1	OF 1
---------------------------	---------------	------------	---------