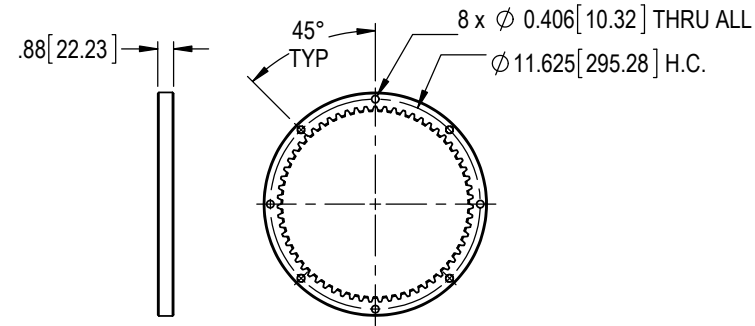


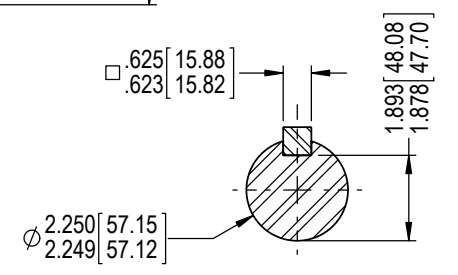
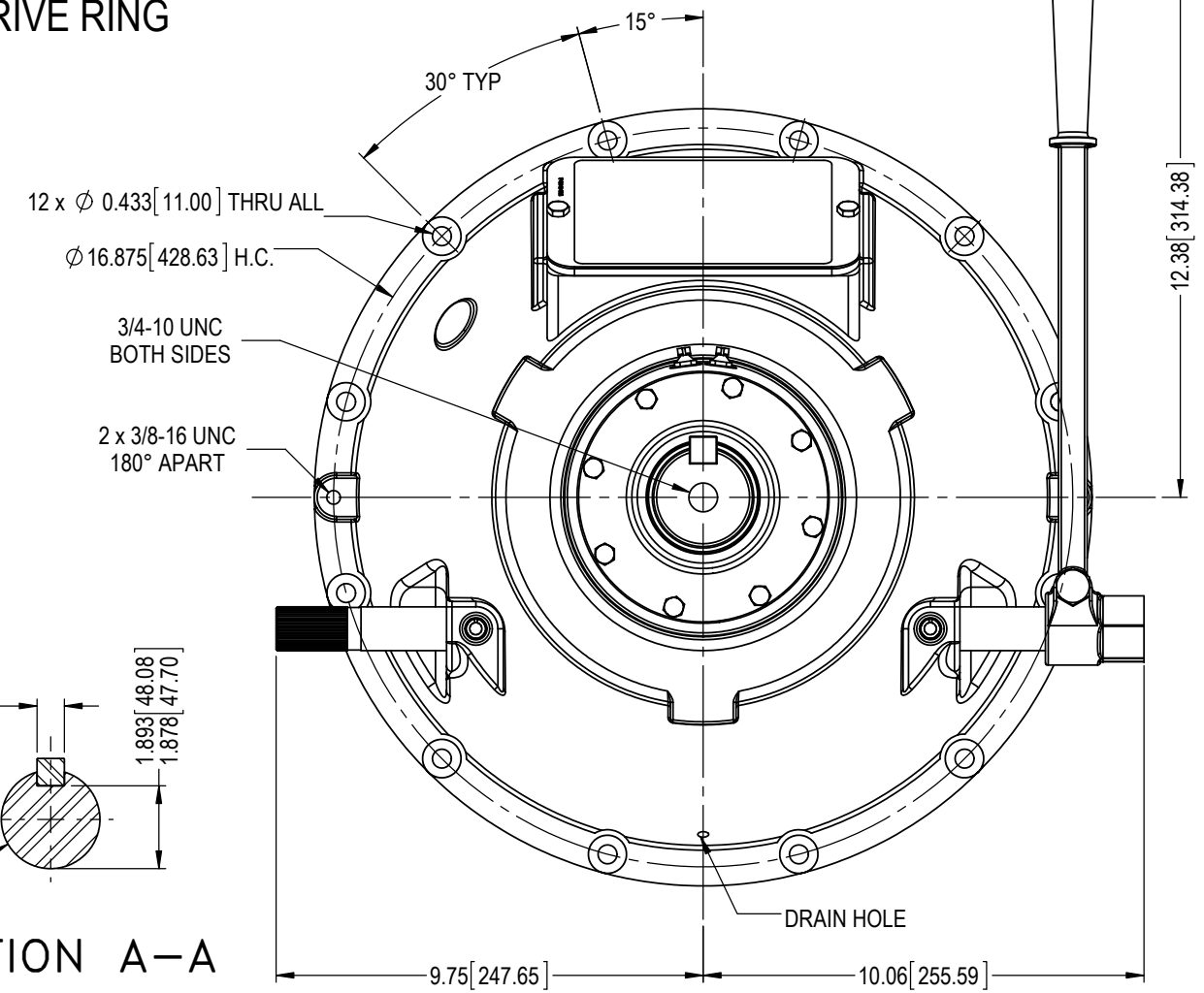
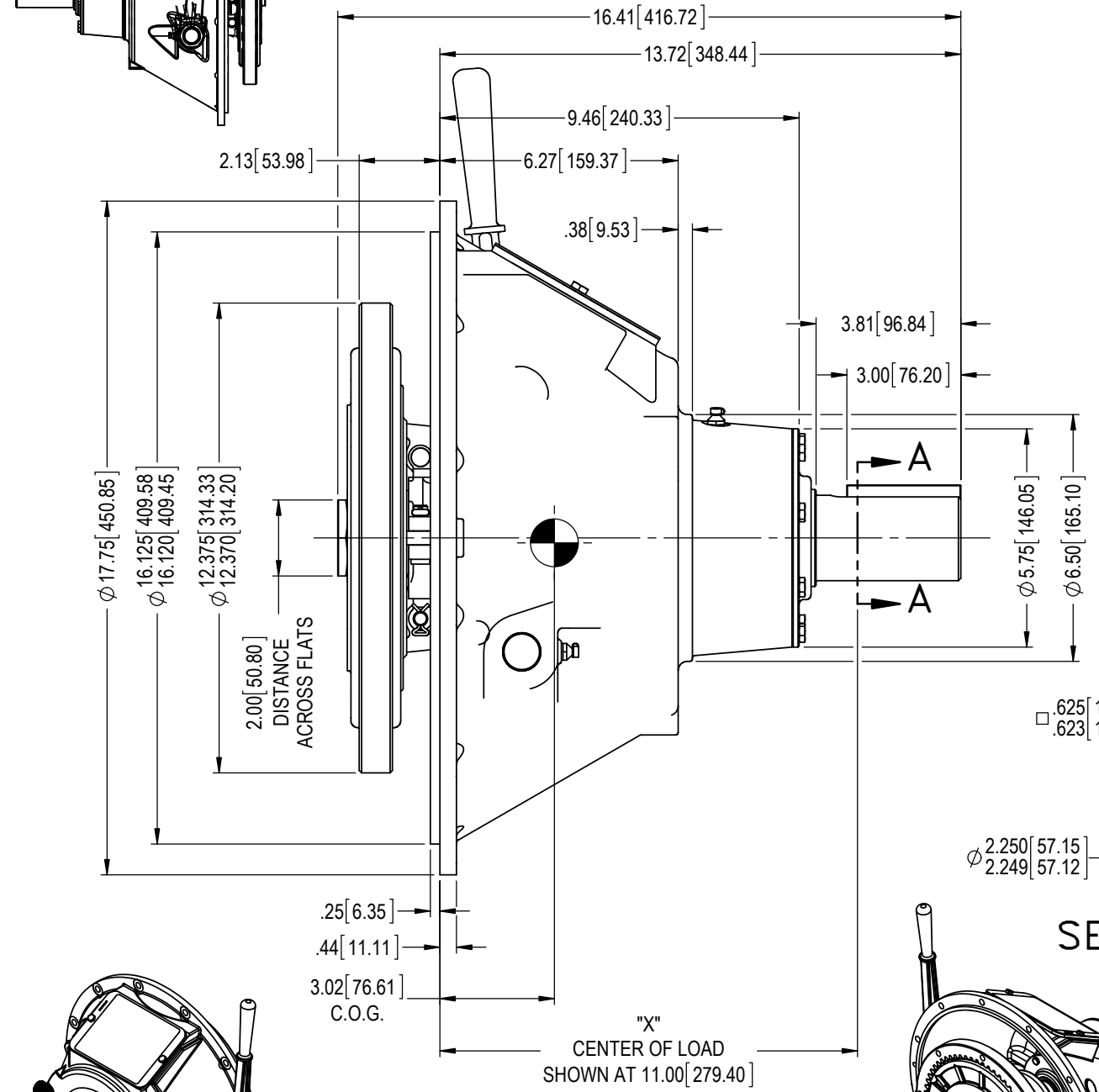
COMPLETE ASSEMBLY
EST WT = 126 lb [57.3 kg]

DRIVE RING & FRICTION DISCS
EST WT = 9.65 lb [4.38 kg]
EST WR² = 1.96 lb-ft² [0.0827 kg-m²]

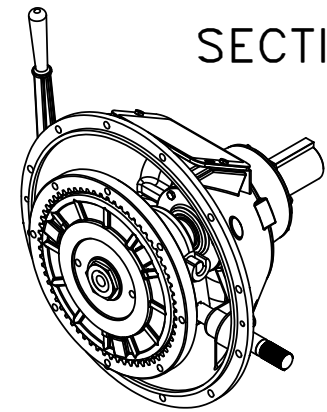
ALL ROTATING MEMBERS (PTO ENGAGED)
EST WR² = 3.38 lb-ft² [0.142 kg-m²]



DRIVE RING



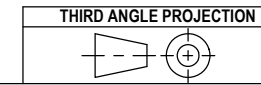
SECTION A-A



D	EC013368	9/22/2017	RC
C	EC012186	14 Jan 16	RC
B	EC012047	04 Dec 15	RC
REV	REVISIONS	DATE	BY

WPT POWER CORPORATION ENGINEERING DRAWINGS ARE NOT TO BE REPRODUCED IN ANY FORM WHATSOEVER WITHOUT AUTHORIZATION	
DRAWN RC	DATE 14 Sep 15
CHECKED BDS	DATE 9/28/2015
APPROVED TDC	DATE 28 Sep 15
ISSUED RC	DATE 28 Sep 15

WPT POWER CORPORATION
WPL110 MECH PTO, SAE #3
BELLHOUSING, BRG COLLAR, PILOTLESS



PART NUMBER WTD-10-137	REVISION D	SHEET 1	OF 1
---------------------------	---------------	------------	---------